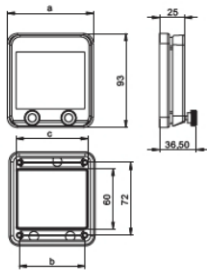


Hinged windows – fuse window IP66/67



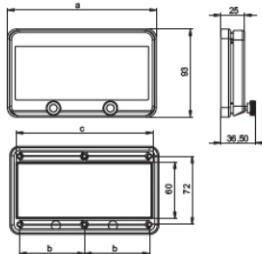
Technical characteristics:

- especially compact (robust) design, made of shock-resistant polycarbonate
- for distributor's construction, O.E.M's, panel builders, etc.
- sprung-loaded window with integrated knurled screws
- size of hinged window suitable for 2, 4, 5, 6, 8, 10, 13, 18 modules (17,5mm each)
- intermediate sizes on request!
- mounting frame made of shock-resistant polycarbonate with integrated gasket for flange mounting
- all metal parts corrosion-resistant
- IP66/67 watertight



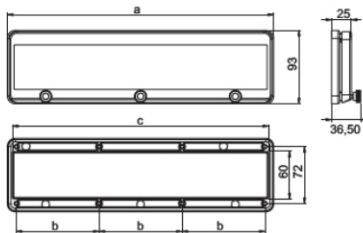
Hinged window 2 / 4 modules

	a [mm]	b [mm]	c [mm]	Weight [g]	pack.unit	Cat.No.
2 Modules	49	27	36	51	40	900602
4 Modules	85	65	72	80	20	900604



Hinged window 5 / 6 / 7 / 8 / 9 / 10 / 12 / 13 modules

	a [mm]	b [mm]	c [mm]	Weight [g]	pack.unit	Cat.No.
5 Modules	103	41,5	90	90	20	900605
6 Modules	121	50,5	108	102	15	900606
7 Modules	139	59,5	126	114	15	900607
8 Modules	157	68,5	144	126	15	900608
9 Modules	175	77,5	162	133	15	900609
10 Modules	193	86,5	180	145	15	900610
12 Modules	229	104,5	216	168	10	900612
13 Modules	247	113,5	234	180	10	900613

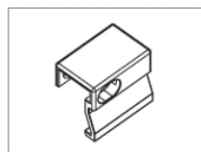


Hinged window 18 modules

	a [mm]	b [mm]	c [mm]	Weight [g]	pack.unit	Cat.No.
18 modules	337	105	324	245	12	900618

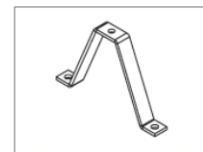
Accessories for IP66/67:

Locking- and lead-sealing device with padlock (40 mm)



ts9000g

Mounting clamp for DIN-rail H=53 mm



19892

Hinged windows – fuse window IP54

Technical data:

- especially compact (robust) design, made of shock-resistant polycarbonate
- for distributor's construction, O.E.M's panel builders, etc.
- self-closing window
- size of hinged window suitable for 4, 6, 8, 9, 10, 11, 12, 13, 14, 18 modules (17,5mm each)
- bearing by means of double hinges
- angle of vee > 180°
- mounting frame made of shock-resistant polycarbonate with integrated gasket for flange mounting
- all metal parts corrosion-resistant
- transport and installation protection of the window with peel back foil
- integrated free position for lead seal
- window holder included
- Protection degree IP54 in vertical position
- Protection degree IP44 in horizontal position

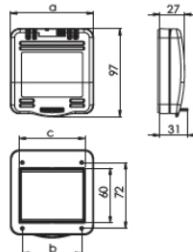


window handle **ti0207**



Hinged window 4 modules

	a [mm]	b [mm]	c [mm]	Weight [g]	pack.unit	Cat.No.
4 modules	92	65	72	97	30	9006504



Delivery: incl. window holder (standard colour: black)
Also possible to order separately



ti0007s

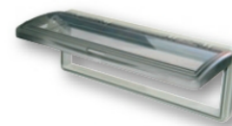
Examples of use for window holder:



for fit-up aid



receptacle - padlock



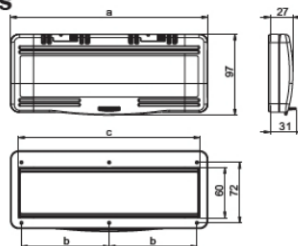
window holder for service works 90°



window holder for service works 180°

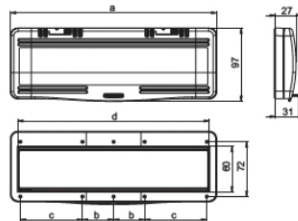
Hinged window 6 / 7 / 8 / 9 / 10 / 11 / 12 modules

	a [mm]	b [mm]	c [mm]	Weight [g]	pack.unit	Cat.No.
6 modules	128	51	108	127	20	9006506
7 modules	139	59,5	126	146	15	9006507
8 modules	164	69	144	155	15	9006508
9 modules	182	78	162	166	15	9006509
10 modules	200	87	180	181	10	9006510
11 modules	218	96	198	198	10	9006511
12 modules	236	105	216	207	10	9006512



Hinged window 13 / 14 modules

	a [mm]	b [mm]	c [mm]	d [mm]	Weight [g]	pack.unit	Cat.No.
13 modules	253	41	73	233	223	10	9006513
14 modules	272	41	82	252	232	10	9006514



Hinged window 18 modules

	a [mm]	b [mm]	c [mm]	Weight [g]	pack.unit	Cat.No.
18 modules	344	105	324	299	10	9006518

