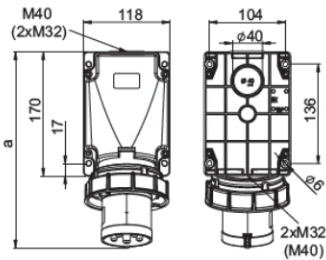




Wall mounted plugs



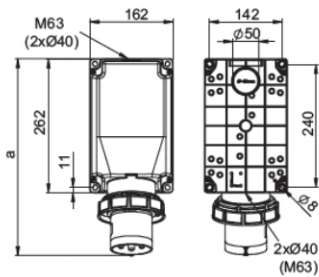
b=height
angle=15°

Power Twist Wall mounted plug IP66/67

	63 Amp		
Poles	3	4	5
a	271	271	271
b	175	175	175
Connection type:	Contact frame with screws		
Wire flexible [mm²]	6-16		
solid [mm²]	6-25		
Contact screws [Ncm]	200 Ncm		
Weight [g]	812	864	914

- contact frame with screws
- housing material: PC/ABS
- contacts: nickel-plated contacts, with pilot contact (see page 10)
- top, bottom or rear entry
- housing can be rotated by 180°
- incl. threaded bung
- for waterproof cover and cable-glands see accessories page 51

IP66/67 watertight



b=height
angle=15°

Power Twist Wall mounted plug IP66/67

	125 Amp		
Poles	3	4	5
a	387	387	387
b	209	209	209
Connection type:	Contact frame with screws		
Wire flexible [mm²]	16-50		
solid [mm²]	16-70		
Contact screws [Ncm]	450 Ncm		
Weight [g]	1620	1725	1834

- contact frame with hexagon socket screws
- housing material: PC/ABS
- contacts: nickel-plated contacts, with pilot contact (see page 10)
- top, bottom or rear entry
- housing can be rotated by 180°
- incl. threaded bung
- for waterproof cover and cable-glands see accessories page 51

IP66/67 watertight

110V~ 50/60Hz 4h	230V~ 50/60Hz 3p=6h 4p+5p=9h	400V~ 50/60Hz 3p=9h 4p+5p=6h	500V~ 50/60Hz 7h	>50- 500V~ 100-300Hz 10h	>50- 500V~ 301-500Hz 2h
Cat.No.	Cat.No.	Cat.No.	Cat.No.	Cat.No.	Cat.No.

Amp.	Poles	pack. unit	110V~	230V~	400V~	500V~	>50-500V~	>50-500V~
63	3	2	533-4	533-6	533-9	533-7	533-10	533-2
63	4	2	534-4	534-9	534-6	534-7	534-10	534-2
63	5	2	535-4	535-9	535-6	535-7	535-10	535-2



535-6

Amp.	Poles	pack. unit	110V~	230V~	400V~	500V~	>50-500V~	>50-500V~
125	3	1	543-4	543-6	543-9	543-7	543-10	543-2
125	4	1	544-4	544-9	544-6	544-7	544-10	544-2
125	5	1	545-4	545-9	545-6	545-7	545-10	545-2



545-6

Accessories see page 51



POWER TWIST

