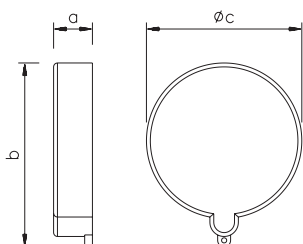


Accessories



Dust cap 16A and 32A

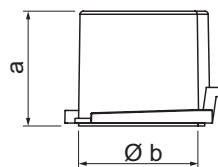
| Poles | 16 Amp | | | 32 Amp | | |
|------------|--------|----|----|--------|----|----|
| | 3 | 4 | 5 | 3 | 4 | 5 |
| a | 15 | 15 | 15 | 15 | 15 | 15 |
| b | 56 | 63 | 71 | 71 | 71 | 79 |
| c | 48 | 54 | 61 | 61 | 61 | 67 |
| Weight [g] | 10 | 12 | 14 | 14 | 14 | 16 |

- for plugs and appliance plugs to protect contacts against dust
- material: TPE/PP

Dust cap 63A and 125A

| Poles | 63 Amp | | | 125 Amp | | |
|------------|--------|----|----|---------|----|----|
| | 3 | 4 | 5 | 3 | 4 | 5 |
| a | 21 | 21 | 21 | 21 | 21 | 21 |
| b | 82 | 82 | 82 | 93 | 93 | 93 |
| c | 73 | 73 | 73 | 86 | 86 | 86 |
| Weight [g] | 21 | 21 | 21 | 25 | 25 | 25 |

- for plugs and appliance plugs to protect contacts against dust
- material: TPE/PP



Water protection cap 16A and 32A

| Poles | 16 Amp | | | 32 Amp | | |
|------------|--------|----|----|--------|----|----|
| | 3 | 4 | 5 | 3 | 4 | 5 |
| a | 40 | 40 | 40 | 50 | 50 | 50 |
| b | 48 | 54 | 62 | 62 | 62 | 69 |
| Weight [g] | 16 | 19 | 26 | 27 | 27 | 33 |

- for 16 and 32A plugs and appliance plugs
- material: Polypropylen
- colour: light grey
- incl. nylon band (appr. 220mm)

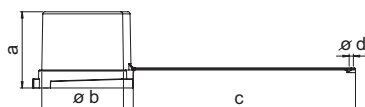
IP67 watertight

Water protection cap 63A and 125A

| Poles | 63 Amp | | | 125 Amp | | |
|------------|--------|-----|-----|---------|-----|-----|
| | 3 | 4 | 5 | 3 | 4 | 5 |
| a | 72 | 72 | 72 | 82 | 82 | 82 |
| b | 78 | 78 | 78 | 91 | 91 | 91 |
| c | 211 | 211 | 211 | 205 | 205 | 205 |
| d | 4 | 4 | 4 | 5 | 5 | 5 |
| Weight [g] | 75 | 75 | 75 | 98 | 98 | 98 |

- for plugs and appliance plugs
- material 63A: Polypropylen
- material 125A: Polyamide PA6

IP67 watertight



Special tool for plug- and connector cable gland nuts

Note: Consider rated torques - see page 14/15

Shark / TURBOSHARK 16/32A

wrench open, L=215mm

711632

POWER TWIST 63/125A

wrench open, L=313mm

7163125

NAUTILUS / Top Taurus

wrench open, L=206mm

711633



| Amp. | Poles | pack. unit | Cat.No. | Amp. | Poles | pack. unit | Cat.No. |
|------|-------|------------|---------|------|-------|------------|---------|
| 16 | 3 | | ts613g | 63 | 3 | | ts635g |
| 16 | 4 | | ts614g | 63 | 4 | | |
| 16 | 5 | | ts615g | 63 | 5 | | |
| 32 | 3 | } | ts623g | 125 | 3 | } | ts645g |
| 32 | 4 | | ts625g | 125 | 4 | | |
| 32 | 5 | | ts625g | 125 | 5 | | |



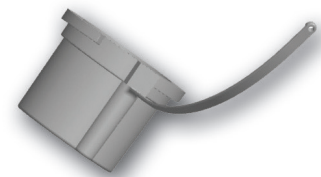
| | | | |
|----|---|----|----------|
| 16 | 3 | 10 | 20163 |
| 16 | 4 | 10 | 20164 |
| 16 | 5 | 10 | 20165 |
| 32 | 3 | 10 | } 203234 |
| 32 | 4 | 10 | |
| 32 | 5 | 10 | |



0152-6TT + 20165



| | | | |
|-----|---|---|---------|
| 63 | 3 | } | ts7632g |
| 63 | 4 | | |
| 63 | 5 | | |
| 125 | 3 | } | ts1252g |
| 125 | 4 | | |
| 125 | 5 | | |



Cable gland IP68, black

Note: For entries without threads, marked by „Ø“, the appropriate lock nuts should be used!

| size | thread lenth | cable diameter | Cat.No. | pack unit |
|-----------|-------------------------------|----------------|-------------|-----------|
| M20 x 1,5 | 15 mm | 10-14 mm | 23201515120 | 50 |
| M25 x 1,5 | 15 mm | 13-18 mm | 23251515140 | 50 |
| M32 x 1,5 | 15 mm | 18-25 mm | 23321515200 | 25 |
| M40 x 1,5 | 18 mm | 22-32 mm | 23401518260 | 10 |
| M50 x 1,5 | 18 mm | 30-38 mm | 23501518310 | 5 |
| M63 x 1,5 | 18 mm | 34-44 mm | 23631518350 | 5 |
| M40 x 1,5 | Lock nut, brass nickel coated | | 264015009 | 50 |
| M50 x 1,5 | Lock nut, brass nickel coated | | 265015009 | 50 |

