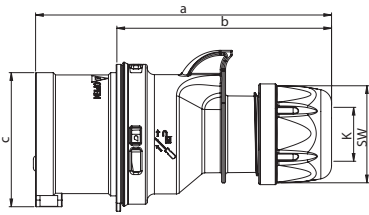


Event technology MIDNIGHT-SERIES

Shark Plug

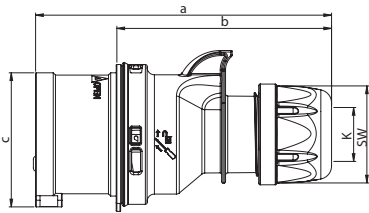


Poles	16 Amp			32 Amp		
	3	4	5	3	4	5
a	122	128	134	150	150	155
b	86	92	98	104	104	109
c	47	53	61	63	63	70
K_cable Ø [mm]	6-15	6-15	8-16	11,5-20	11,5-20	11,5-22
Connection type:	Screw terminal					
Wire flexible [mm ²]	1-2,5			2,5-6		
Contact screws [Ncm]	100 Ncm			110 Ncm		
SW	42	42	42	50	50	50
Weight [g]	109	128	151	181	201	232

- with screw terminals
- housing material: PA6
- contacts: brass
 - to order nickel-plated contacts please add a "v" e.g. 015-6xv

IP44 splashproof

Turbo Shark Plug

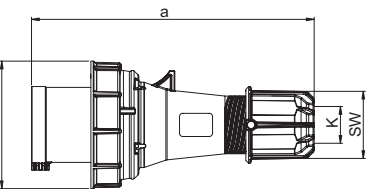


Poles	16 Amp			32 Amp		
	3	4	5	3	4	5
a	122	128	134	150	150	155
b	86	92	98	104	104	109
c	47	53	61	63	63	70
K_cable Ø [mm]	6-15	6-15	8-16	11,5-20	11,5-20	11,5-22
Connection type:	Screwless terminal					
Wire flexible [mm ²]	1-2,5			2,5-6		
SW	42	42	42	50	50	50
Weight [g]	111	132	156	186	206	241

- screwless connection technology
- housing material: PA6
- contacts: brass
 - to order nickel-plated contacts please add a "v" e.g. 015-6TTxv

IP44 splashproof

Power Twist Plug

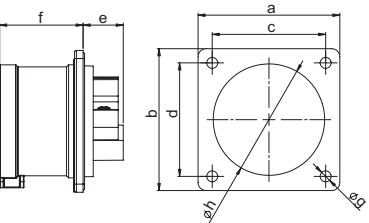


Poles	63 Amp			125 Amp		
	3	4	5	3	4	5
a	257	257	257	270	270	270
b	114	114	114	131	131	131
K_cable Ø [mm]	14,5-36	14,5-36	14,5-36	22,5-50	22,5-50	22,5-50
Connection type:	Contact frame with screws					
Wire flexible [mm ²]	6-16			16-50		
Contact screws [Ncm]	200 Ncm			450 Ncm		
SW	61	61	61	81	81	81
Weight [g]	570	617	666	956	1064	1169

- Contact frame with screws (63A) for 125A with hexagon socket screws
- housing material: PA6
- contacts: nickel-plated contacts, with pilot contact (see page 9)

IP66/67 watertight

Flanged plug straight

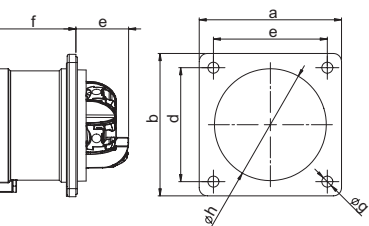


Poles	16 Amp			32 Amp		
	3	4	5	3	4	5
Flange						
a x b	70	70	70	70	70	70
Fixing center						
c x d	56	56	56	56	56	56
e	21	21	20	21	21	21
f	42	42	42	51	51	51
g	5,5	5,5	5,5	5,5	5,5	5,5
h	43	43	55	55	55	55
Connection type:	Screw terminal					
Wire flexible [mm ²]	1-2,5			2,5-6		
solid [mm ²]	1-4			2,5-10		
Contact screws [Ncm]	100 Ncm			110 Ncm		
Weight [g]	86	101	118	125	145	165

- with screw terminals
- housing material: PA6
- contacts: brass
 - to order nickel-plated contacts please add a "v" e.g. 615-6xv
- According to EN 60309: For correct use a locking device has to be provided (see page 32)

IP44 splashproof

Turbo Twist Flanged plug straight



Poles	16 Amp		32 Amp	
	3	5	4	5
Flange				
a x b	70	70	70	70
Fixing center				
c x d	56	56	56	56
e	26	26	29	29
f	42	42	51	51
g	5,5	5,5	5,5	5,5
h	43	55	55	55
Connection type:	Screwless terminal			
Wire flexible [mm ²]	1-2,5		2,5-6	
solid [mm ²]	1-4		2,5-10	
Weight [g]	899	122	151	172

- screwless connection technology
- housing material: PA6
- contacts: brass
 - to order nickel-plated contacts please add a "v" e.g. 615-6TTxv
- According to EN 60309: For correct use a locking device has to be provided (see page 32)

IP44 splashproof

230V~

50/60Hz
3p=6h
4p+5p=9h

400V~

50/60Hz
3p=9h
4p+5p=6h

Amp.	Poles	pack. unit
16	3	10
16	4	10
16	5	10
32	3	10
32	4	10
32	5	10

013-6x

014-6x
015-6x

023-6x

024-6x
025-6x



023-6x

16	3	10
16	4	10
16	5	10
32	3	10
32	4	10
32	5	10

013-6TTx

014-6TTx
015-6TTx

023-6TTx

024-6TTx
025-6TTx



015-6TTx

63	3	2
63	4	2
63	5	2
125	3	2
125	4	2
125	5	2

033-6xs

034-6xs
035-6xs

043-6xs

044-6xs
045-6xs



035-6xs

with flange 70 x 70 - fixing center 56 x 56

16	3	10
16	4	10
16	5	10
32	3	10
32	4	10
32	5	10

613-6x

614-6x
615-6x

623-6x

624-6x
625-6x



625-6x

with flange 70 x 70 - fixing center 56 x 56

16	3	10
16	5	10
32	4	10
32	5	10

613-6TTx

615-6TTx

624-6TTx
625-6TTx



625-6TTx

Minimum order quantity: 50 pcs.

